

PRIME RESEARCH

— Empowering decisions —

Commodity Daily

11 June 2026



Name	Current Price	Previous Close	Change	% Change
Commodities				
COMEX Gold	4072.31	4260.85	-188.54	-4.42%
COMEX Silver	63.361	65.3605	-1.9995	-3.06%
WTI Crude Oil	90.03	88.2	1.83	2.07%
Natural Gas	3.185	3.140	0.045	1.43%
LME Copper	13516	13615	-99.5	-0.73%
LME Zinc	3491.0	3555.5	-64.5	-1.81%
LME Lead	1962.5	1984.0	-21.5	-1.08%
LME Aluminium	3466.0	3547.5	-81.5	-2.30%
Currencies				
Dollar Index	99.947	99.909	0.038	0.04%
USDINR	95.700	95.353	-0.0813	0.00%
EURUSD	1.1535	1.1543	-0.0008	-0.07%
Global Equity Indices				
BSE Sensex	75868	73919	64.42	0.00%
Hang Seng Index	24408	24566	-158	-0.64%
Nikkei	64179	65417	-1237	-1.89%
Shanghai	3993	4010	-17	-0.42%
S&P 500 Index	7267	7387	-120	-1.62%
Dow Jones	49919	50872	-953	-1.87%
Nasdaq	28508	29085	-576	-1.98%
FTSE 500	10255	10227	27	0.27%
CAC Index	8162	8203	-42	-0.51%
DAX Index	24195	24433	-238	-0.97%

GLOBAL MARKET ROUND UP

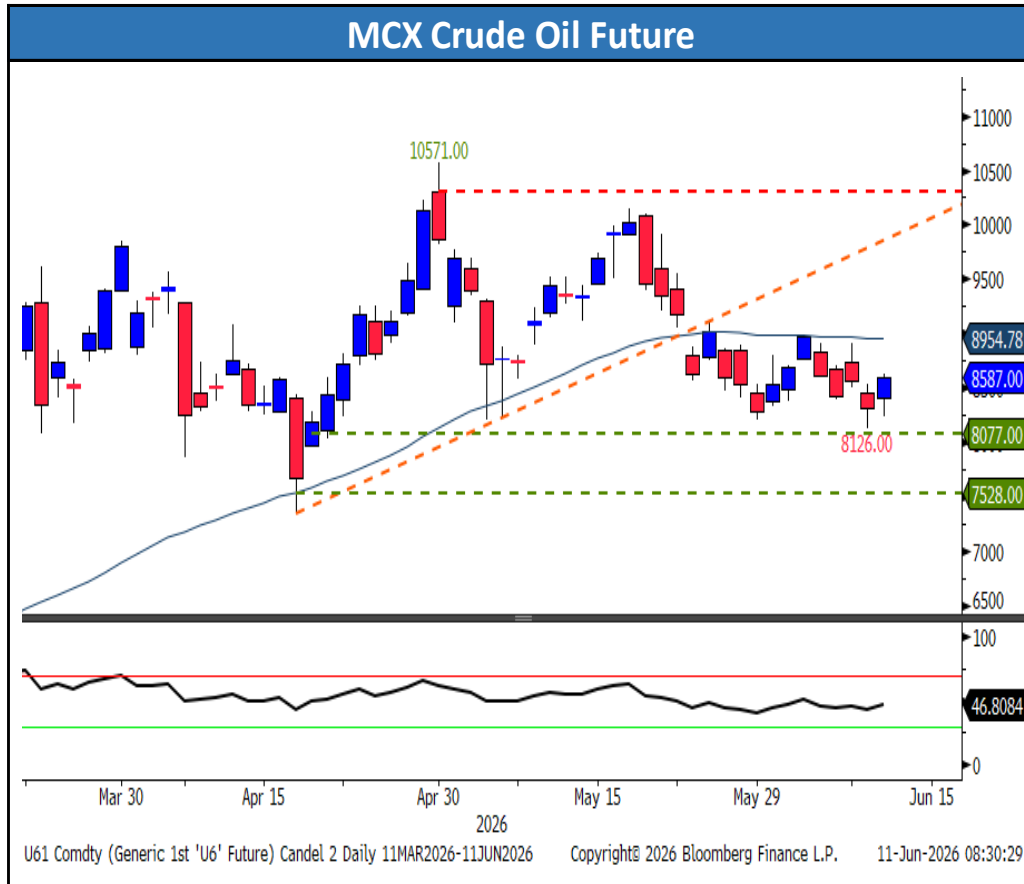
- ⇒ Gold prices extended their decline on Thursday as escalating geopolitical tensions and a deteriorating interest rate outlook continued to weigh on investor sentiment. Fresh pressure emerged after U.S. President Donald Trump warned of further military action against Iran, reviving concerns that prolonged disruptions to energy supplies could keep inflation elevated and force central banks to maintain a restrictive policy stance for longer.
- ⇒ Adding to the bearish mood, U.S. inflation data released on Wednesday showed consumer prices in May rose at the fastest annual pace in more than three years, largely driven by higher energy costs. Although the data broadly matched market expectations, it reinforced concerns that inflation remains persistent and could delay any shift toward monetary easing.
- ⇒ From a technical perspective, the outlook has weakened considerably after spot gold broke below several key support levels. With the market increasingly pricing in the possibility of further policy tightening, near-term risks remain skewed to the downside, leaving precious metals vulnerable to additional selling pressure.
- ⇒ Crude oil prices rose, with WTI trading above \$93 per barrel on Thursday, extending gains from the previous session as renewed U.S. strikes against Iran heightened concerns that peace efforts could unravel and prolong disruptions across global energy markets. Additional support came from U.S. inventory data, which showed crude stockpiles fell by 7.2 million barrels last week, marking a seventh consecutive weekly decline and signaling tightening supply conditions.
- ⇒ Natural gas futures settled higher on Thursday, snapping a three-session losing streak as updated weather forecasts pointed to warmer temperatures across parts of the United States later this month, supporting expectations for stronger cooling demand. Market attention now turns to today's weekly storage report from the EIA, with market expecting a 100 Bcf injection into storage, slightly above the seasonal average. The report is expected to provide fresh insight into supply-demand conditions and could influence the near-term direction of natural gas prices.
- ⇒ Copper and other base metals remained under pressure as renewed tensions in the Middle East dampened risk appetite and raised concerns over the global growth outlook.



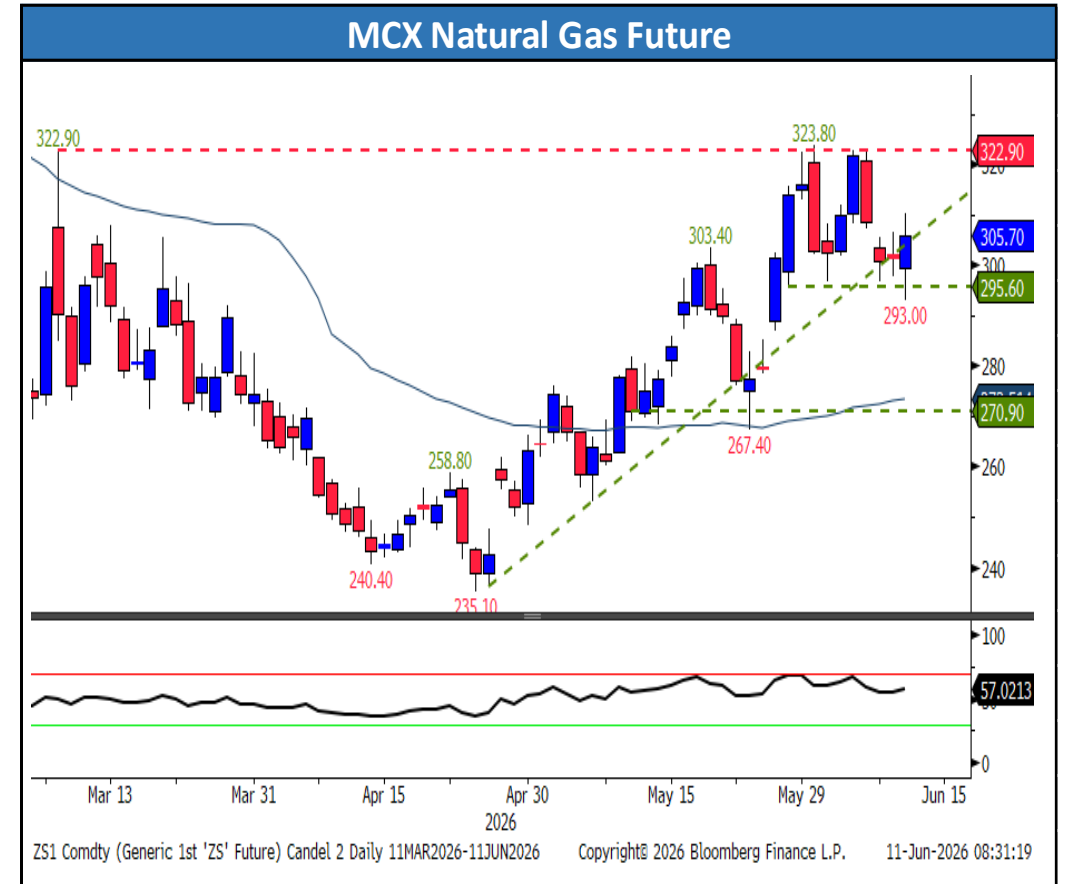
- **Trading Range:** 143050 to 148780
- **Intraday Trading Strategy:** Sell Gold Mini Jul Fut at 146050-146075 SL 147025 Target 144900/144480



- **Trading Range:** 228500 to 243750
- **Intraday Trading Strategy:** Buy Silver Mini Jun Fut at 235900-235950 SL 234080 Target 239025/240675



- **Trading Range:** 8350 to 9175
- **Intraday Trading Strategy:** Buy Crude Oil Jun Fut at 8620-8625 SL 8505 Target 8875/9005



- **Trading Range:** 294 to 329
- **Intraday Trading Strategy:** Buy Natural Gas Jun Fut at 302-302.50 SL 297.8 Target 312/317.50



- **Trading Range:** 1280 to 1324
- **Intraday Trading Strategy:** Sell Copper Jun Fut at 1314-1314.80 SL 1322 Target 1306/1302



- **Trading Range:** 353 to 365
- **Intraday Trading Strategy:** Sell Zinc Jun Fut at 359.5-359.8 SL 363.8 Target 355.0/353.5

Technical Levels

Commdity	Pivot	Supt.3	Supt.2	Supt.1	Resi.1	Resi.2	Resi.3	5 DMA	20 DMA	RSI
Gold	148923	143017	145970	146994	149947	151876	154829	154077	159625	27.7
Silver	235527	221821	228674	232089	238942	242380	249233	246751	265521	32.6
Crude Oil	8606	7768	8187	8456	8875	9025	9444	8662	9013	48.3
Natural Gas	303.0	268.2	285.6	295.7	313.1	320.4	337.8	307.7	304.8	51.5
Copper	1316.4	1277.6	1297.0	1305.3	1324.7	1335.8	1355.2	1337.9	1357.8	41.4
Zinc	361.1	349.3	355.2	357.3	363.2	367.0	372.9	365.4	366.5	47.4
Lead	204.5	201.0	202.8	203.7	205.4	206.3	208.0	205.8	206.2	47.2
Aluminium	372.4	358.2	365.3	368.3	375.4	379.5	386.6	381.7	384.8	39.7

Commodity Movement

Commdity	Expiry	Open	High	Low	Close	% Chg.	Open Interest	Chg. In OI	Volume	Chg. In Volume
Gold	05-Aug-26	149926	150853	147900	148017	-2.90%	9358	4%	7864	66%
Silver	03-Jul-26	234009	238964	232111	235505	-1.27%	11588	-3%	12638	11%
Crude Oil	18-Jun-26	8505	8755	8336	8726	3.62%	9148	-22%	78284	-19%
Natural Gas	25-Jun-26	299.5	310.4	293.0	305.7	1.36%	16505	-12%	115803	9%
Copper	30-Jun-26	1324.7	1327.5	1308.1	1313.6	-1.06%	15419	-3%	13394	5%
Zinc	30-Jun-26	364.6	364.9	359.0	359.4	-1.68%	2524	-3%	3680	22%
Lead	30-Jun-26	203.6	205.4	203.6	204.6	-0.24%	436	3%	113	-52%
Aluminium	30-Jun-26	375.1	376.5	369.4	371.3	-1.62%	3364	-1%	3210	-26%

Disclosure:

I, Saumil Gandhi, Commerce graduate authors and the names subscribed to this report, hereby certify that all of the views expressed in this research report accurately reflect our views about the subject issuer(s) or securities. SEBI conducted the inspection and based on their observations have issued advise/warning. The said observations have been complied with. We also certify that no part of our compensation was, is, or will be directly or indirectly related to the specific recommendation(s) or view(s) in this report.

Research Analyst or his/her relative or HDFC Securities Ltd. does not have any financial interest in the subject company. Also Research Analyst or his relative or HDFC Securities Ltd. or its Associate may have beneficial ownership of 1% or more in the subject company at the end of the month immediately preceding the date of publication of the Research Report. Further Research Analyst or his relative or HDFC Securities Ltd. or its associate does have/does not have any material conflict of interest.

Any holding in stock – No

HDFC Securities Limited (HSL) is a SEBI Registered Research Analyst having registration no. INH000002475.

Disclosure & Disclaimer :

HDFC Securities Limited (HSL) is a SEBI Registered Research Analyst having registration no. INH000002475.

This report has been prepared by HDFC Securities Ltd and is solely for information of the recipient only. The report must not be used as a singular basis of any investment decision. The views herein are of a general nature and do not consider the risk appetite or the particular circumstances of an individual investor; readers are requested to take professional advice before investing. “This report may have been refined using AI tools to enhance clarity and readability.”

Nothing in this document should be construed as investment advice. Each recipient of this document should make such investigations as they deem necessary to arrive at an independent evaluation of an investment in securities of the companies referred to in this document (including merits and risks) and should consult their own advisors to determine merits and risks of such investment. The information and opinions contained herein have been compiled or arrived at, based upon information obtained in good faith from sources believed to be reliable. Such information has not been independently verified and no guaranty, representation of warranty, express or implied, is made as to its accuracy, completeness or correctness. All such information and opinions are subject to change without notice. Descriptions of any company or companies or their securities mentioned herein are not intended to be complete. HSL is not obliged to update this report for such changes. HSL has the right to make changes and modifications at any time.

This report is not directed to, or intended for display, downloading, printing, reproducing or for distribution to or use by, any person or entity who is a citizen or resident or located in any locality, state, country or other jurisdiction where such distribution, publication, reproduction, availability or use would be contrary to law or regulation or what would subject HSL or its affiliates to any registration or licensing requirement within such jurisdiction.

If this report is inadvertently sent or has reached any person in such country, especially, United States of America, the same should be ignored and brought to the attention of the sender. This document may not be reproduced, distributed or published in whole or in part, directly or indirectly, for any purposes or in any manner.

Foreign currencies denominated securities, wherever mentioned, are subject to exchange rate fluctuations, which could have an adverse effect on their value or price, or the income derived from them. In addition, investors in securities such as ADRs, the values of which are influenced by foreign currencies effectively assume currency risk. It should not be considered to be taken as an offer to sell or a solicitation to buy any security. This document is not, and should not, be construed as an offer or solicitation of an offer, to buy or sell any securities or other financial instruments. This report should not be construed as an invitation or solicitation to do business with HSL. HSL may from time to time solicit from, or perform broking, or other services for, any company mentioned in this mail and/or its attachments.

HSL and its affiliated company(ies), their directors and employees may; (a) from time to time, have a long or short position in, and buy or sell the securities of the company(ies) mentioned herein or (b) be engaged in any other transaction involving such securities and earn brokerage or other compensation or act as a market maker in the financial instruments of the company(ies) discussed herein or act as an advisor or lender/borrower to such company(ies) or may have any other potential conflict of interests with respect to any recommendation and other related information and opinions.

HSL, its directors, analysts or employees do not take any responsibility, financial or otherwise, of the losses or the damages sustained due to the investments made or any action taken on basis of this report, including but not restricted to, fluctuation in the prices of shares and bonds, changes in the currency rates, diminution in the NAVs, reduction in the dividend or income, etc.

HSL and other group companies, its directors, associates, employees may have various positions in any of the stocks, securities and financial instruments dealt in the report, or may make sell or purchase or other deals in these securities from time to time or may deal in other securities of the companies / organizations described in this report. As regards the associates of HSL please refer the website.

HSL or its associates might have managed or co-managed public offering of securities for the subject company or might have been mandated by the subject company for any other assignment in the past twelve months.

Please note that HDFC Securities has a proprietary trading desk. This desk maintains an arm's length distance with the Research team and all its activities are segregated from Research activities. The proprietary desk operates independently, potentially leading to investment decisions that may deviate from research views.

HSL or its associates might have received any compensation from the companies mentioned in the report during the period preceding twelve months from the date of this report for services in respect of managing or co-managing public offerings, corporate finance, investment banking or merchant banking, brokerage services or other advisory service in a merger or specific transaction in the normal course of business.

HSL or its analysts did not receive any compensation or other benefits from the companies mentioned in the report or third party in connection with preparation of the research report. Accordingly, neither HSL nor Research Analysts have any material conflict of interest at the time of publication of this report. Compensation of our Research Analysts is not based on any specific merchant banking, investment banking or brokerage service transactions. HSL may have issued other reports that are inconsistent with and reach different conclusion from the information presented in this report.

Research entity has not been engaged in market making activity for the subject company. Research analyst has not served as an officer, director or employee of the subject company. We have not received any compensation/benefits from the subject company or third party in connection with the Research Report.

HDFC securities Limited, I Think Techno Campus, Building - B, "Alpha", Office Floor 8, Near Kanjurmarg Station, Opp. Crompton Greaves, Kanjurmarg (East), Mumbai 400 042 Phone: (022) 3075 3400 Fax: (022) 2496 5066

Compliance Officer: Murli V Karkera Email: complianceofficer@hdfcsec.com Phone: (022) 3045 3600

For grievance redressal contact Customer Care Team Email: customercare@hdfcsec.com Phone: (022) 3901 9400

HDFC Securities Limited, SEBI Reg. No.: NSE, BSE, MSEI, MCX: INZ000186937; AMFI Reg. No. ARN: 13549; PFRDA Reg. No. POP: 11092018; IRDA Corporate Agent License No.: CA0062; SEBI Research Analyst Reg. No.: INH000002475; SEBI Investment Adviser Reg. No.: INA000011538; CIN - U67120MH2000PLC152193

Investment in securities market are subject to market risks. Read all the related documents carefully before investing.

Mutual Funds Investments are subject to market risk. Please read the offer and scheme related documents carefully before investing.

Registration granted by SEBI, membership of BASL (in case of IAs) and certification from NISM in no way guarantee performance of the intermediary or provide any assurance of returns to investors.